



# VENUE MAP BOOK

## Keeping our members informed and involved

RDAA is a friendly club committed to providing great and affordable fishing opportunities for all and to helping newcomers get the 'fishing habit' and existing anglers improve their fishing skills. We produce monthly video reports and regular updates on our Facebook page and website.

Website: [www.rdaa.co.uk](http://www.rdaa.co.uk)

Facebook: Reading & District Angling Association

YouTube: <https://youtube.com/@rdaa>

### Coaching

[rdaacoachingteam@gmail.com](mailto:rdaacoachingteam@gmail.com)

### Better Fishing Academy

[betterfishingacademyrdaa@gmail.com](mailto:betterfishingacademyrdaa@gmail.com)

### Contact

[info@rdaa.co.uk](mailto:info@rdaa.co.uk)

Page

Page

### RIVER KENNET

- 6 PADWORTH RIVER
- 7 UPPER BENYON
- 8 UFTON RIVER
- 9 LOWER BENYON
- 10 THEALE RIVER
- 11 CALCOT RIVER
- 12 HOLYBROOK
- 13 BURGFIELD RIVER
- 14 BEAT 2
- 15 BEAT 3B
- 16 BEAT 4
- 17 BEAT 5

### RIVER BLACKWATER

- 32 BLACKWATER

### RIVER THAMES

- 33 NORTHMOOR
- 34 SANDFORD MILL
- 35 SANDFORD (SHARED WATER)
- 36 WALLINGFORD
- 37 WALLINGFORD (SHARED WATER)
- 38 SOUTH STOKE & CHOLSEY (SHARED WATER)
- 39 SONNING RIVER

### LAKE VENUES

- 40 FLINT/BROWN-LEE/CALLOWS/WILLMOTTS
- 41 PINGWOOD LAGOON
- 42 ENGLEFIELD LAGOON
- 43 COTTAGE LANE
- 44 MOATLANDS
- 45 WYLIES
- 46 WHISTLEY MILL
- 47 SONNING EYE
- 48 LONGWATER

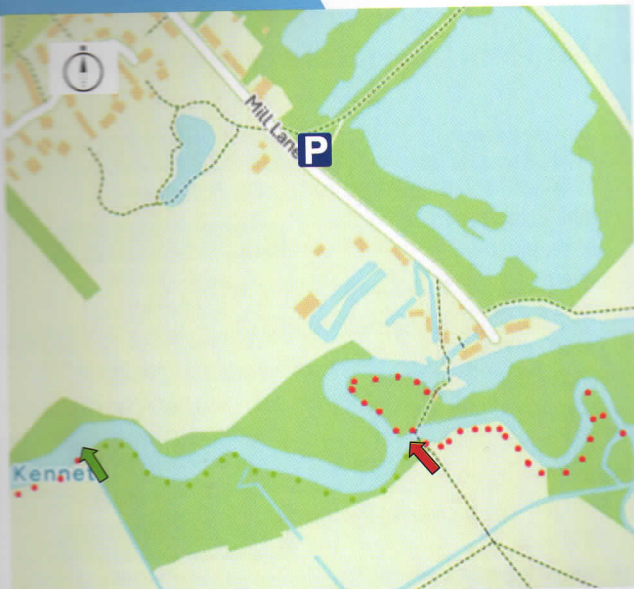
### KENNET & AVON CANAL

- 18 FROXFIELD CANAL
- 19 MIDGHAM CANAL
- 20 SALMON CUT
- 21 EAST TOWNEY/PADWORTH ROTA
- 22 THEALE CANAL
- 23 BURGFIELD CANAL
- 24 BEAT 1
- 25 BEAT 3A

### LODDON at WHISTLEY

- 30 UPPER LODDON
- 31 LOWER LODDON

## PADWORTH RIVER



- ➔ Venue start [helped.fencing.nodded](http://helped.fencing.nodded)
- ➔ Venue end [reclusive.pastime.revived](http://reclusive.pastime.revived)
- P Parking can be found at [financial.glaze.heave](http://financial.glaze.heave)

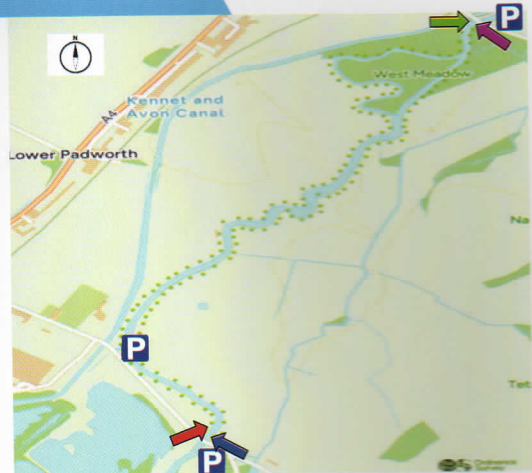
Padworth is known for Barbel, Roach, Perch, Chub, Dace and Pike. Anyone straying onto the out of bounds areas will run the risk of permit confiscation.

This venue can be night fished on the General Permit.

### RIVER KENNET

PLEASE REFER TO WEBSITE FOR ALL FISHERY RULES  
[www.RDAA.CO.UK](http://www.RDAA.CO.UK)

## UPPER BENYON



- ➔ Venue start North bank [tourist.cashiers.ahead](http://tourist.cashiers.ahead)
- ➔ Venue end North bank [whirlwind.publisher.topic](http://whirlwind.publisher.topic)
- ➔ Venue start South bank [enigma.musically.brilliant](http://enigma.musically.brilliant)
- ➔ Venue South end [oddly.happening.spared](http://oddly.happening.spared)
- P Upstream side of road parking can be found at [throw.sinkhole.horns](http://throw.sinkhole.horns) or Upstream RDAA car park at [coverings.hops.maximum](http://coverings.hops.maximum)
- P Downstream RDAA parking at [hobbyists.comb.selling](http://hobbyists.comb.selling)

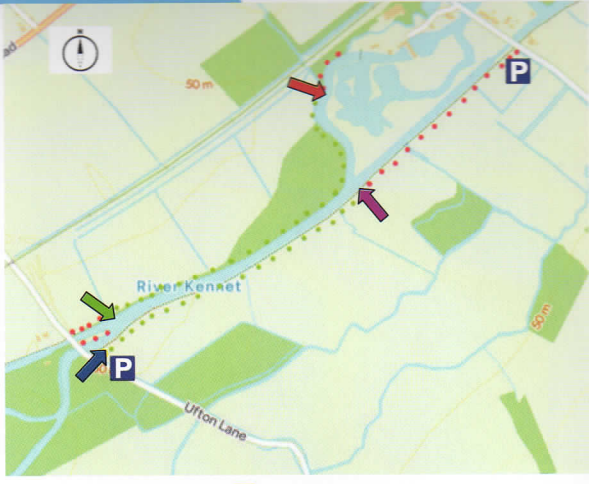
**NO FISHING** within 30m of overhead powerlines.

Upper Benyon river venue holds Barbel, Chub, Roach, Dace, Grayling, Perch, Pike and the occasional Carp.

Night fishing on Bronze/South/North/Platinum permit only.

### RIVER KENNET

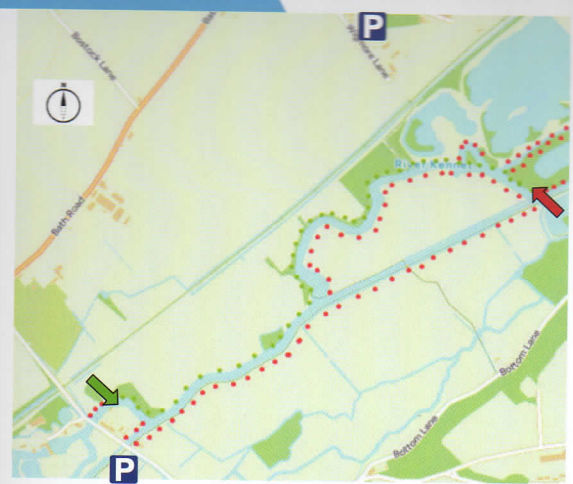
PLEASE REFER TO WEBSITE FOR ALL FISHERY RULES  
[www.RDAA.CO.UK](http://www.RDAA.CO.UK)



- ➔ Venue start North bank [red hatched] evolves.native.simmer
- ➔ Venue end North bank [red hatched] hosts.plots.tens
- ➔ Venue start South bank [blue hatched] weds.reefs.unfocused
- ➔ Venue end South bank [purple hatched] sculpting.sharpen.less
- P Parking can be found at [red hatched] hobbyists.comb.selling (Upstream) or [red hatched] broke.agree.atoms (Downstream)

**NO FISHING** within 25m of locks/ landing stages or bridges.  
**NO FISHING** within 30m of overhead powerlines.  
 Ufton river venue holds Barbel, Chub, Roach, Dace, Perch, Grayling, Pike and the occasional Carp.  
 Night fishing on Bronze/South/North/Platinum permit only.

PLEASE REFER TO WEBSITE FOR ALL FISHERY RULES  
[www.RDAA.co.uk](http://www.RDAA.co.uk)



- ➔ Venue start [red hatched] frozen.fired.skill
- ➔ Venue end [red hatched] dads.stages.hero
- P Side of road parking can be found at [red hatched] scare.hooked.brands (Downstream) or [red hatched] hoping.amber.reveal (Upstream) which is a public car park

**NO FISHING** within 30m of overhead powerlines.  
 Lower Benyon river section is known for Barbel, Roach, Perch, Chub, Dace, Grayling and Pike.  
 Anyone straying onto the out of bounds areas will run the risk of permit confiscation.

PLEASE REFER TO WEBSITE FOR ALL FISHERY RULES  
[www.RDAA.co.uk](http://www.RDAA.co.uk)

THEALE RIVER

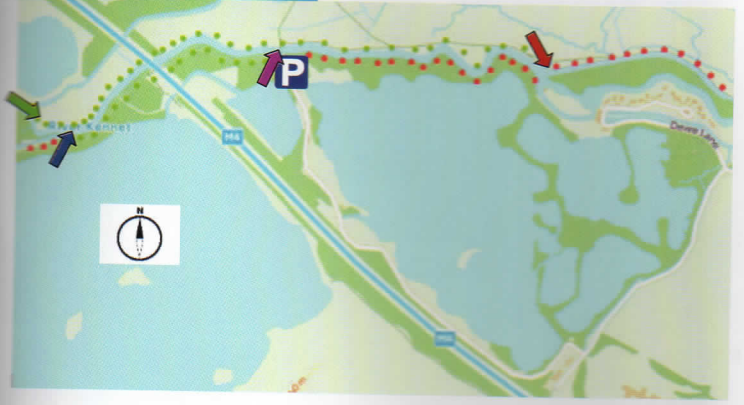


- ➔ Venue start [red hatched] radar.remove.sizes
- ➔ Venue end [red hatched] funded.wedge.moon
- P Parking can be found at [red hatched] vast.backs.sounds

**NO FISHING** within 25m of locks/ landing stages or bridges.  
**NO FISHING** within 30m of overhead powerlines.  
 Our Theale river venue holds Barbel, Chub, Roach, Perch, Pike and the occasional Carp.  
 Night fishing on Bronze/South/North/Platinum permit only.

PLEASE REFER TO WEBSITE FOR ALL FISHERY RULES  
[www.RDAA.co.uk](http://www.RDAA.co.uk)

CALCOT A & B

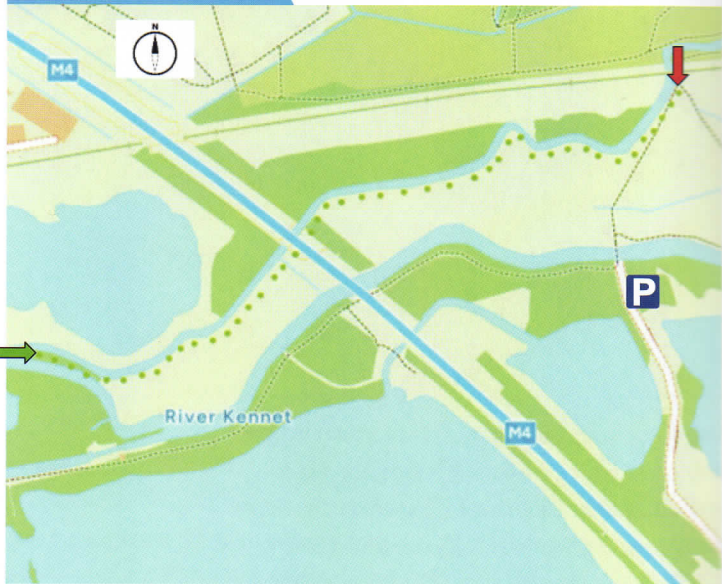


- ➔ Venue start North bank [red hatched] began.noble.churn
- ➔ Venue end North bank [red hatched] posts.shows.song
- ➔ Venue start South bank [blue hatched] spun.riders.remark
- ➔ Venue end South bank [purple hatched] comb.next.recent
- P Parking can be found at [red hatched] bugs.animalmeant

**NO FISHING** within 25m of locks or landing stages.  
**NO FISHING** within 30m of overhead powerlines.  
 Calcot river section is known for Barbel, Roach, Perch, Chub, Dace, Pike and the occasional Carp.  
 Night fishing on Bronze/South/North/Platinum permit only.

PLEASE REFER TO WEBSITE FOR ALL FISHERY RULES  
[www.RDAA.co.uk](http://www.RDAA.co.uk)

## HOLYBROOK



- ➔ Venue start boot.forces.kind
- ➔ Venue end mess.icons.games
- P Parking can be found at bugs.animal.meant

**NO FISHING** within 30m of overhead powerlines.

The Holybrook section is known for Barbel, Roach, Perch, Chub, Dace and Pike.

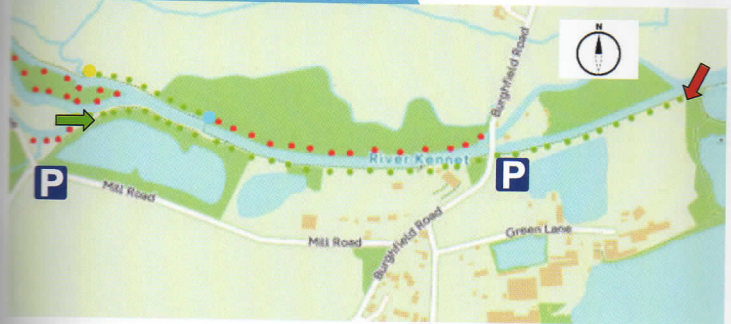
Night fishing on Bronze/South/North/Platinum permit only.

12

RIVER KENNET

PLEASE REFER TO WEBSITE FOR ALL FISHERY RULES  
[www.RDAA.co.uk](http://www.RDAA.co.uk)

## BURGHFIELD RIVER



- ➔ Venue start suffice.mining.prom
- ➔ Venue end legs.scars.summer
- P Side of road parking can be found at rises.town.wages (Upstream) and forest.calls.forced (Downstream)

**NO FISHING** within 25m of locks or landing stages.

**NO FISHING** within 30m of overhead powerlines.

Burghfield river section is known for Barbel, Roach, Perch, Chub, Dace, Pike and the occasional Carp.

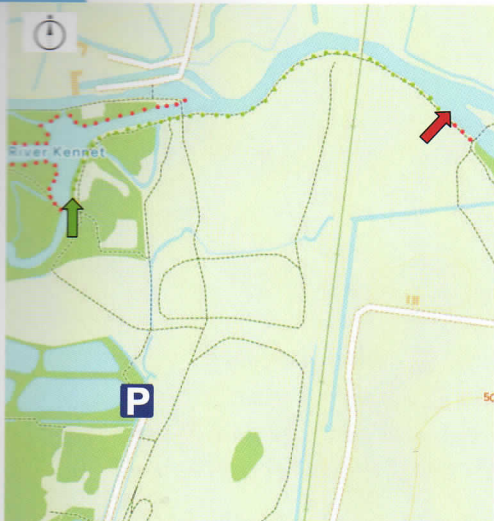
Night fishing on Bronze/South/North/Platinum permit only.

RIVER KENNET

13

PLEASE REFER TO WEBSITE FOR ALL FISHERY RULES  
[www.RDAA.co.uk](http://www.RDAA.co.uk)

## BEAT 2



- ➔ Venue start traps.valve.rivers
- ➔ Venue end curry.solve.gosh
- P Parking can be found at closer.looked.envy

**NO FISHING** within 25m of locks or landing stages.

**NO FISHING** within 30m of overhead powerlines.

Beat 2 is a river section where target species consist of Barbel, Roach, Perch, Chub, Skimmers and Pike.

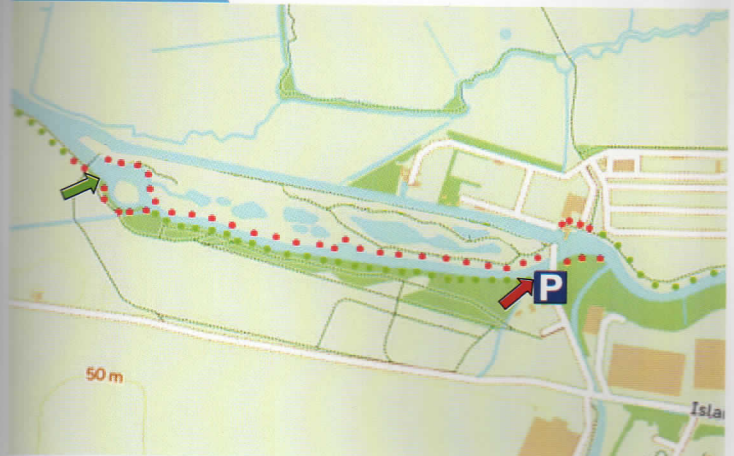
Night fishing on Bronze/South/North/Platinum permit only.

14

RIVER KENNET

PLEASE REFER TO WEBSITE FOR ALL FISHERY RULES  
[www.RDAA.co.uk](http://www.RDAA.co.uk)

## BEAT 3B



- ➔ River venue start cave.strike.grit
- ➔ River venue end offers.fantastic.toward
- P Parking can be found at keeps.bridge.using

**NO FISHING** within 25m of locks or landing stages.

**NO FISHING** within 30m of overhead powerlines.

Beat 3a is a canal section where target species consist of Roach, Perch, Chub, Skimmers and Pike.

Beat 3b is a river section where Chub and Barbel are the preferred target species.

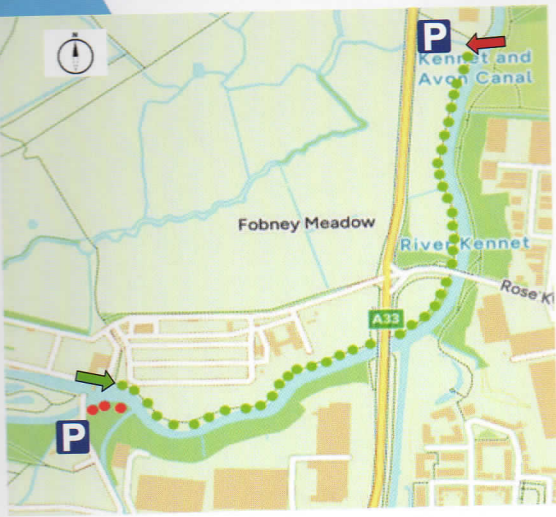
Night fishing on Bronze/South/North/Platinum permit only.

RIVER KENNET

15

PLEASE REFER TO WEBSITE FOR ALL FISHERY RULES  
[www.RDAA.co.uk](http://www.RDAA.co.uk)

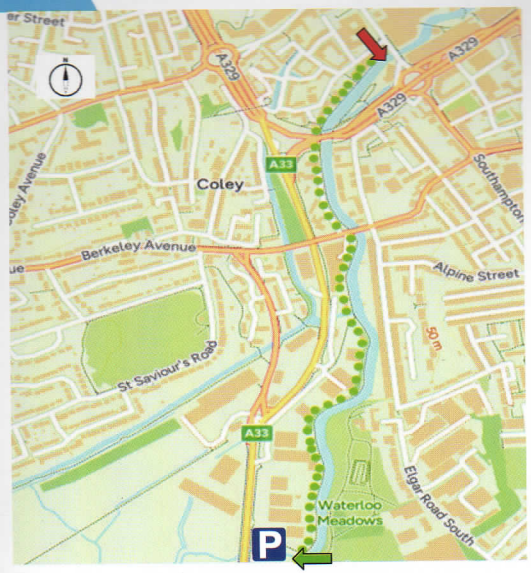
# BEAT 4



- ➔ Venue start moons.wishes.next
- ➔ Venue end across.regime.penny
- P Upstream parking can be found at keeps.bridge.using
- P Downstream parking can be found at spot.stir.strut

**NO FISHING** within 25m of locks or landing stages.  
**NO FISHING** within 30m of overhead powerlines.  
 Beat 4 is a river section where target species consist of Barbel, Roach, Perch, Chub, Skimmers, Bream and Pike.  
 Night fishing on Bronze/South/North/Platinum permit only.

# BEAT 5



- ➔ Venue start across.regime.penny
- ➔ Venue end moved.curvy.composers
- P Parking can be found at spot.stir.strut

**NO FISHING** within 25m of locks or landing stages.  
**NO FISHING** within 30m of overhead powerlines.  
 Beat 5 is a river section where target species consist of Barbel, Roach, Perch, Chub, Skimmers and Pike.  
 Night fishing on Bronze/South/North/Platinum permit only.

# FROXFIELD



- ➔ Venue start showrooms.though.prevents
- ➔ Venue end rummage.claw.dishing
- P Side of road parking can be found at stiff.gracing.waxer (Upstream) and gasp.motored.jumbo (Downstream)

**NO FISHING** within 25m of locks or landing stages or bridges.  
**NO FISHING** within 30m of overhead powerlines.  
 Froxfield is a canal section where target species consist of Roach, Perch, Skimmers, Pike and the occasional Carp.  
**NO NIGHT FISHING**

# MIDGHAM CANAL



- ➔ Venue start rescuer.incorrect.octagon
- ➔ Venue end captive.assist.tightrope
- P Side of the road parking can be found at alpha.agreed.mankind

**NO FISHING** within 25m of locks/ landing stages or Bridges.  
**NO FISHING** within 30m of overhead powerlines.  
 Midgham is a canal section where target species consist of Roach, Perch, Skimmers, Pike and the occasional Carp.  
 Night fishing on Bronze/South/North/Platinum permit only.

# SALMON CUT



- ➔ Venue start notion.tomato.impose
- ➔ Venue end wharfs.orchids.weeps
- P Side of the road parking can be found at universes.recur.snowy

**NO FISHING** within 25m of locks/ landing stages or bridges.  
**NO FISHING** within 30m of overhead powerlines.  
 Salmon cut is a canal section where target species consist of Roach, Perch, Skimmers, Pike and the occasional Carp.  
 Night fishing on Bronze/South/North/Platinum permit only.

# EAST TOWNEY / PADWORTH ROTA



- ➔ Venue start North bank chips.scrub.zest
- ➔ Venue end North bank wordplay.flotation.ducks
- ➔ Venue start South bank rejoiced.theme.overnight
- ➔ Venue end South bank hangs.annual.ambushes
- P Parking can be found at coverings.hops.maximum (Upstream) and divisible.crust.manifests (Downstream)

**NO FISHING** within 25m of locks or landing stages.  
**NO FISHING** within 30m of overhead powerlines.  
 This canal section is known for Perch, Chub, Roach, Pike and the occasional Carp.  
 Night fishing on Bronze/South/North/Platinum permit only.

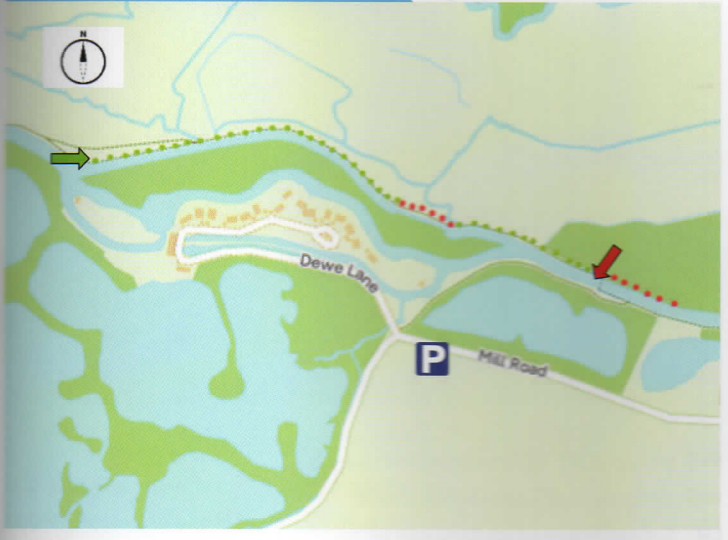
# THEALE CANAL



- ➔ Venue start dream.bound.tables
- ➔ Venue end client.small.bath
- P Parking can be found at vast.backs.sounds

**NO FISHING** within 25m of locks/ landing stages or bridges.  
**NO FISHING** within 30m of overhead powerlines.  
 Theale canal section has an abundance of Roach, Perch, Pike and the occasional Carp.  
 Night fishing on Bronze/South/North/Platinum permit only.

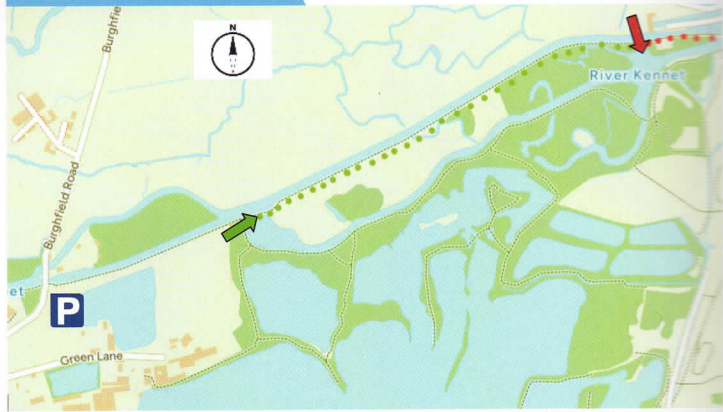
# BURGHFIELD CANAL



- ➔ Venue start posts.shows.song
- ➔ Venue end spell.rats.suffice
- P Side of road parking can be found at rises.town.wages

**NO FISHING** within 25m of locks or landing stages.  
**NO FISHING** within 30m of overhead powerlines.  
 Night fishing on Bronze/South/North/Platinum permit only.

## BEAT 1 Canal



- ➔ Venue start broken.admits.sends
- ➔ Venue end aims.stream.valid
- P** Side of the road parking can be found at forest.calls.forced

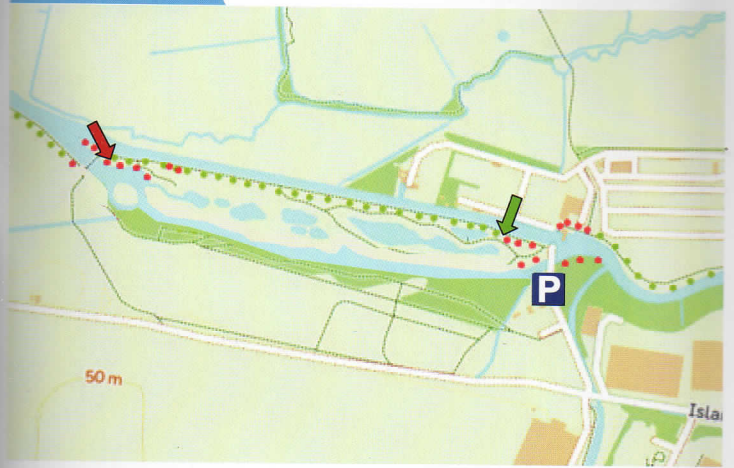
**NO FISHING** within 25m of locks/ landing stages or bridges.

**NO FISHING** within 30m of overhead powerlines.

**Beat 1** is a canal section where target species consist of Roach, Perch, Chub, Skimmers, Pike and the occasional Carp.

Night fishing on Bronze/South/North/Platinum permit only.

## BEAT 3A



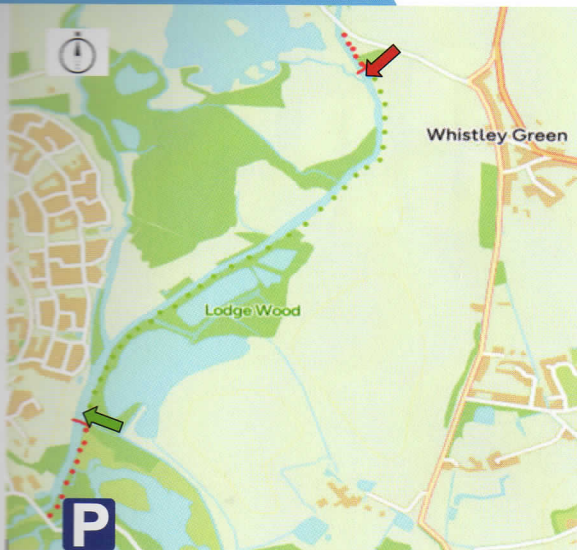
- ➔ Canal venue start smooth.slowly.reds
- ➔ Canal venue end pasta.deaf.valid
- P** Parking can be found at keeps.bridge.using

**NO FISHING** within 25m of locks or landing stages.

**NO FISHING** within 30m of overhead powerlines.

**Beat 3a** is a canal section where target species consist of Roach, Perch, Chub, Skimmers and Pike.

## UPPER RIVER LODDON



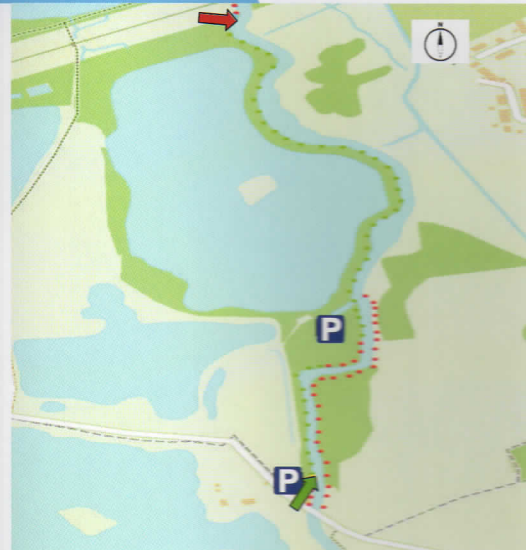
- ➔ Venue start fade.punchy.paint
- ➔ Venue end science.agenda.craziest
- P** Side of road parking can be found at socket.dinner.noses or Downstream RDAA parking at disbanded.spark.punctual

**NO FISHING** within 30m of overhead powerlines.

The river Loddon holds Barbel, Chub, Roach, Perch, Pike and most river species.

Night fishing on Bronze/South/North/Platinum permit only.

## LOWER LODDON

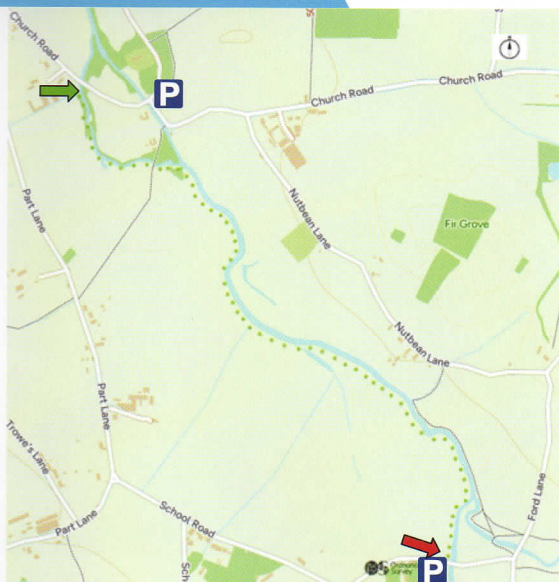


- ➔ Venue start compress.flannel.wiring
- ➔ Venue end incomes.emeralds.shorter
- P** Parking can be found at disbanded.spark.punctual (Middle) or caused.scooped.nozzle (Upstream)

The Loddon river is known for Barbel, Roach, Perch, Chub, Dace and Pike. Anyone straying onto the out of bounds areas will run the risk of permit confiscation.

Night fishing on Bronze/South/North/Platinum permit only.

## RIVER BLACKWATER



- ➔ Venue start lower.unframed.motive
- ➔ Venue end cave.dame.rods
- P Upstream parking data.streaking.wiped
- P Downstream parking linen.levels.inner

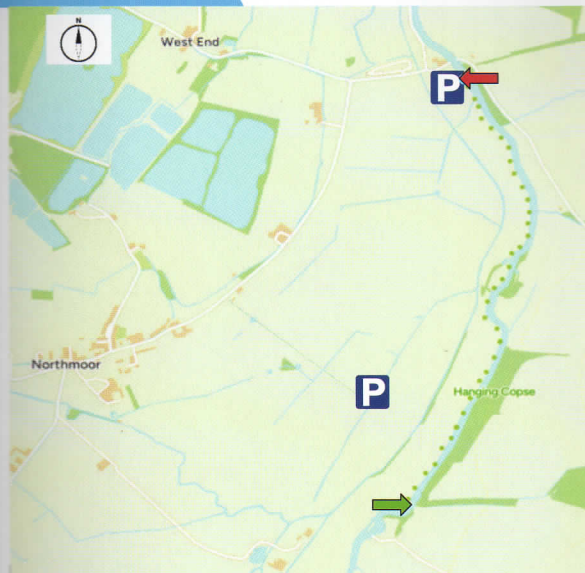
The Blackwater permits are available online here via Clubmate (including the lock combination codes for the southern farm gate).  
**THIS IS NOT AN OPEN ACCESS FISHERY AND PERMITS MUST BE BOOKED OUT IN ADVANCE**

32

RIVER THAMES

PLEASE REFER TO WEBSITE FOR ALL FISHERY RULES  
[www.RDAA.co.uk](http://www.RDAA.co.uk)

## NORTHMOOR



- ➔ Venue start presenter.tissue.magnitude
- ➔ Venue end incur.magnum.gasp
- P Parking can be found at calculate.toward.dried or Upstream at the Ferryman pub at a cost of £5 truck.ramp.maddening

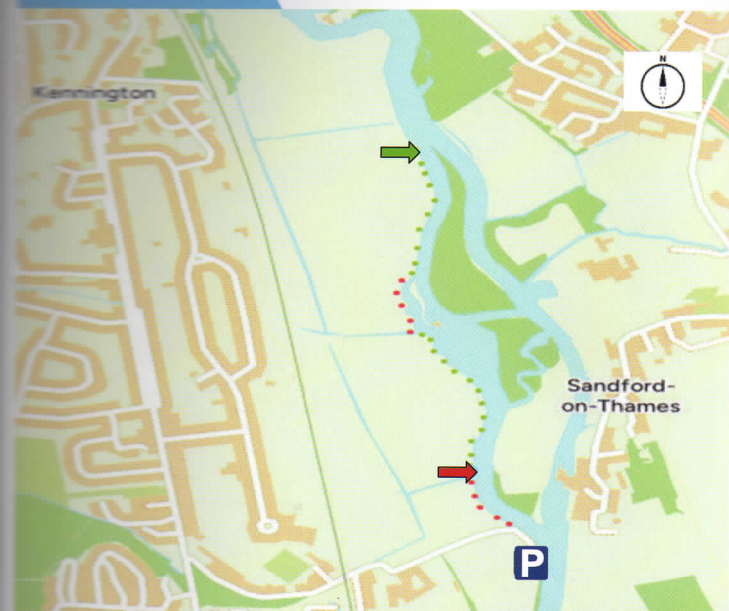
**NO FISHING** within 30m of overhead powerlines.  
 The River Thames at Northmoor is known for Barbel, Chub, Roach, Perch, Bream, Pike and the occasional Carp.  
 Night fishing on Bronze/South/North/Platinum permit only.

RIVER THAMES

33

PLEASE REFER TO WEBSITE FOR ALL FISHERY RULES  
[www.RDAA.co.uk](http://www.RDAA.co.uk)

## SANDFORD



- ➔ Venue start baking.vague.aside
- ➔ Venue end goodnight.rates.like
- P Parking can be found at detail.upcoming.motivator

**NO FISHING** within 30m of overhead powerlines.  
 The Thames at Sandford is renowned for species such as Barbel, Chub, Roach, Perch, Silver Bream, Pike and the occasional Carp.  
 This venue can be night fished on the General permit.

34

RIVER THAMES

PLEASE REFER TO WEBSITE FOR ALL FISHERY RULES  
[www.RDAA.co.uk](http://www.RDAA.co.uk)

## SHARED WATER SANDFORD



- ➔ Venue start poppy.spicy.loves
- ➔ Venue end yell.full.insurance
- P Public parking can be found at regrowth.sketch.period

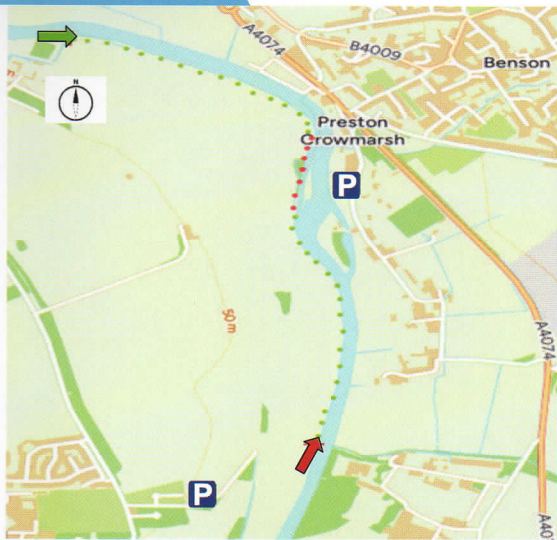
RDAA and Littlemore A.S. ([www.littlemoreanglingsociety.co.uk](http://www.littlemoreanglingsociety.co.uk)) have agreed to share their waters at Sandford in the Oxford area. This will not include match days, RDAA members please check Littlemore Match Booking dates which can be found on our website before fishing.

RIVER THAMES

35

PLEASE REFER TO WEBSITE FOR ALL FISHERY RULES  
[www.RDAA.co.uk](http://www.RDAA.co.uk)

## WALLINGFORD



- ➔ Venue start hidden.retailing.alleges
- ➔ Venue end worry.meanwhile.intricate
- P Side of road parking can be found at awaited.ounce.pylon or weeks.parade.fastening

**NO FISHING** within 25m of locks or landing stages.  
**NO FISHING** within 30m of overhead powerlines.

The Thames at Wallingford holds Barbel, Chub, Roach, Perch, Zander, Pike and most Thames species.

Night fishing on Bronze/South/North/Platinum permit only.

36

RIVER THAMES

PLEASE REFER TO WEBSITE FOR ALL FISHERY RULES  
[www.RDAA.co.uk](http://www.RDAA.co.uk)

## WALLINGFORD SHARED VENUE

- ➔ Start of venue feasting.clots.gear
- ➔ End of venue kicks.reach.corrosive
- P Upstream parking serve.chest.departure
- P Downstream parking galloped.bridges.unfocused

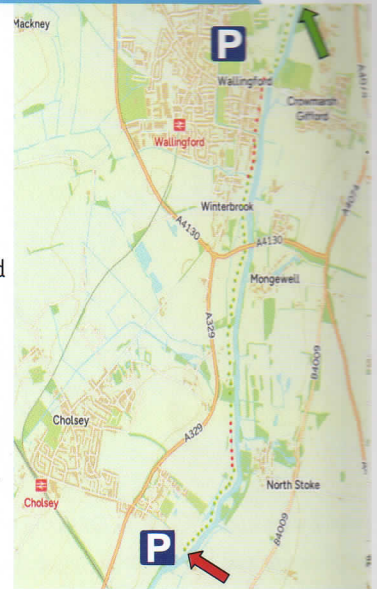
**RDAA and Jolly Anglers A.C.** have agreed to share their waters in the Wallingford area

**Town Waters** - from the three firs (downstream end of RDAA Wallingford water) to the wooden bridge. Parking in the cemetery lane.

**Chalmore** - one field upstream and two fields downstream of the western side of the Wallingford bypass bridge. Parking is on the footpath on the downstream side of the bridge. Cars should be fully off the road.

**BMH** - downstream for two fields from the bow bridge stream (bird sanctuary). The first field is only about 100 metres. Parking on the verge opposite Caps Lane or in the large lay-by on northern side of Cholsey and walk across the field to the bottom end of the reach, and effectively the top end of Fairmile.

**Fairmile** - downstream from BMH to Ferry Lane in Cholsey. Parking as above and in ferry lane, and should be one side only to allow access for boats to be launched.

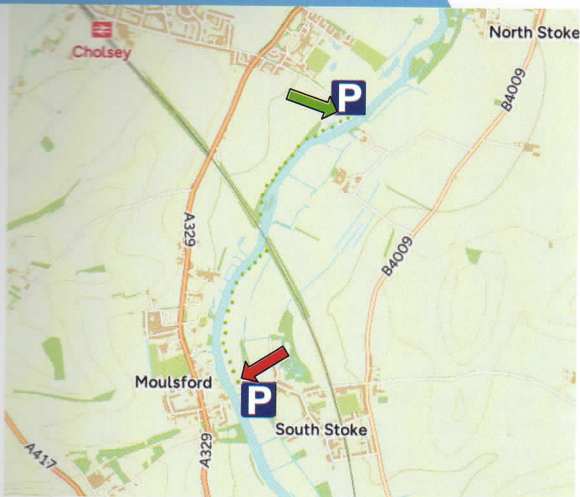


RIVER THAMES

37

PLEASE REFER TO WEBSITE FOR ALL FISHERY RULES  
[www.RDAA.co.uk](http://www.RDAA.co.uk)

## SOUTH STOKE & CHOLSEY



- ➔ Venue start agreeable.courage.flip
- ➔ Venue end stormed.minus.divorcing
- P Upstream parking galloped.bridges.unfocused
- Downstream parking scorching.package.announce

We have agreed to take over the maintenance and bailiffing of both the LAA stretches at South Stoke (East Bank) and Cholsey (West Bank) - approximately 1.3 miles in total.

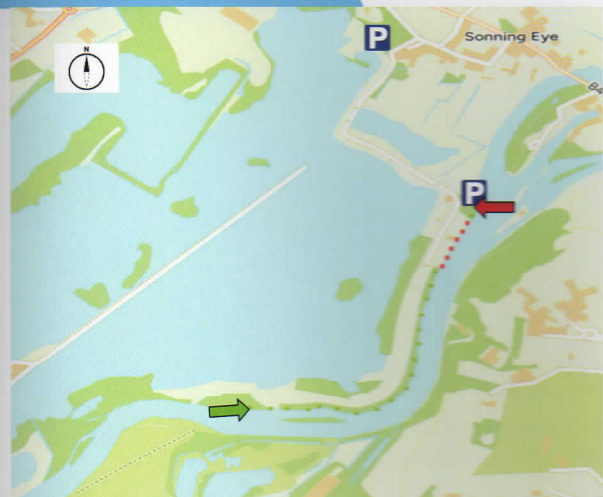
South Stoke is an easy walk and is well known for its quality roach fishing. Some big shoals of bream are also present along with good chub and pike. Access is via the track at the end of Ferry Road, South Stoke and just beyond the Perch and Pike pub. Park on the right of the track before the river. The railway bridge marks upstream boundary on the East Bank.

38

RIVER THAMES

PLEASE REFER TO WEBSITE FOR ALL FISHERY RULES  
[www.RDAA.co.uk](http://www.RDAA.co.uk)

## SONNING EYE RIVER



- ➔ River venue start ripe.shelf.payer
  - ➔ River venue end foster.frost.such
  - P Parking can be found at simply.stroke.filed
- There is also a small area for parking at the Northern end of the lake rapid.pulse.grass

**NO FISHING** within 30m of overhead powerlines.

The Thames at Sonning is renowned for species such as Chub, Roach, Perch, Bream, Pike and the occasional Carp.

Anyone attempting to fish out of bounds will run the risk of losing their permit.

RIVER THAMES

39

PLEASE REFER TO WEBSITE FOR ALL FISHERY RULES  
[www.RDAA.co.uk](http://www.RDAA.co.uk)

## FARNHAM FLINT/BROWN-LEE/CALLOWS/WILLMOTTS



**P** Parking can be found at Searles Farm Lane pilots.stews.pound and Kirtons Farm Road normal.crown.times

A Toilet can be found at the café.

The main lake venue has a history as a big fish water with large Carp, Pike, Bream, Roach and Tench.

Brown-lee contains Bream, Roach Carp, Tench Pike and Perch.

Willmotts contains mostly Carp, but Tench and Roach can be caught.

Callows is a small fish water with Crucian Carp, Tench, Roach and Rudd. Take all litter home.

Anyone straying into the out of bounds areas run the risk of losing their permit.

Please abide by the specific venue rules signposted on Willmotts and Callows - **NO NIGHT FISHING.**

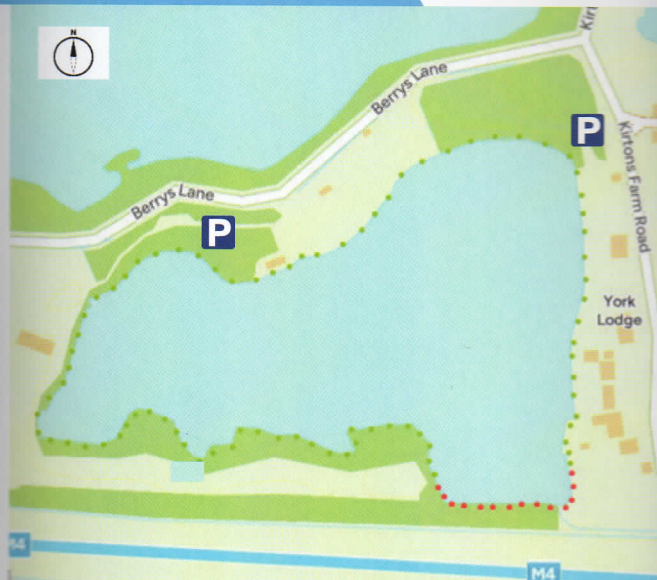
Night fishing on Farnham Flint South/Platinum permit only.

40

LAKE VENUES

PLEASE REFER TO WEBSITE FOR ALL FISHERY RULES  
[www.RDAA.co.uk](http://www.RDAA.co.uk)

## PINGEWOOD LAGOON



**P** Parking can be found at Berrys Lane paper.wires.fine or Kirton Farm Lane skirt.swift.crowds

Pingewood is renowned for big Carp fishing, Specimen Tench and Bream are also present.

Anyone straying into the out of bounds areas run the risk of losing their permit.

Take all litter home.

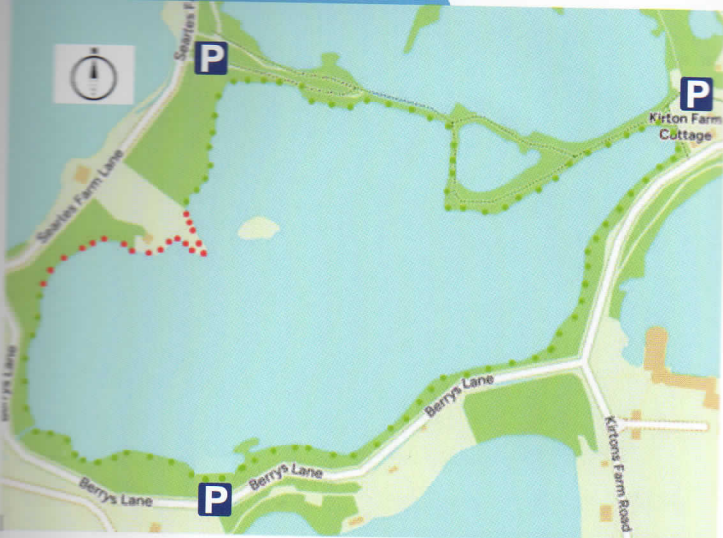
**NIGHT FISHING ON SOUTH/PLATINUM PERMIT ONLY**

LAKE VENUES

41

PLEASE REFER TO WEBSITE FOR ALL FISHERY RULES  
[www.RDAA.co.uk](http://www.RDAA.co.uk)

## ENGLEFIELD LAGOON



**P** Parking can be found at Searles Farm Lane prime.dawn.mercy at Berrys Lane lonely.loses.hiking and Kirtons Farm Road normal.crown.times

This lake venue has a history as a big fish water with large Carp, Pike, Perch, Roach and Tench.

Take all litter home.

Anyone straying into the out of bounds areas run the risk of losing their permit.

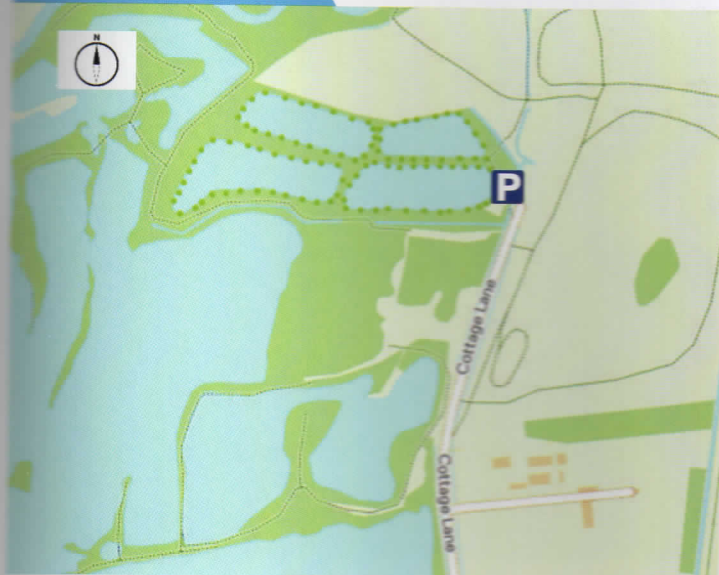
**NIGHT FISHING ON SOUTH/PLATINUM PERMIT ONLY**

42

LAKE VENUES

PLEASE REFER TO WEBSITE FOR ALL FISHERY RULES  
[www.RDAA.co.uk](http://www.RDAA.co.uk)

## COTTAGE LANE



**P** Parking can be found at closer.looked.envy

The 4 lakes at Cottage Lane are known for Carp and Tench.

Night fishing on Bronze/South/North/Platinum permit only.

Take all litter home.

LAKE VENUES

43

PLEASE REFER TO WEBSITE FOR ALL FISHERY RULES  
[www.RDAA.co.uk](http://www.RDAA.co.uk)

## MOATLANDS



**P** Parking can be found at dart.tolls.drill (Lakeside) or photos.goes.boxer (Riverside)

Moatlands is known for Tench, Pike and Perch.

Take all litter home.

Anyone straying into the out of bounds areas run the risk of losing their permit.

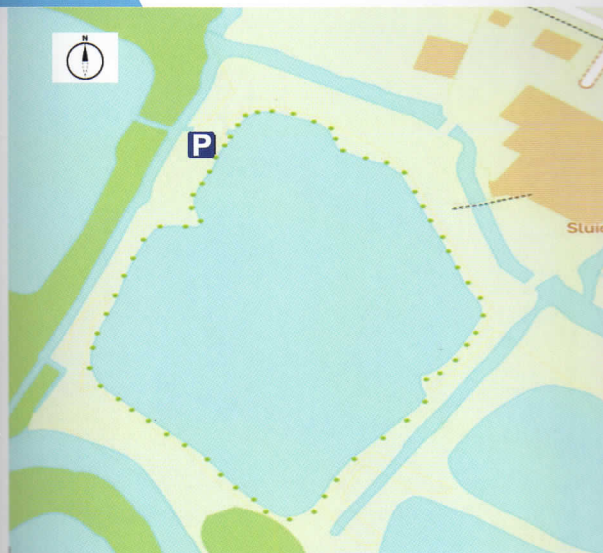
Night fishing is permitted on General Permit.

44

### LAKE VENUES

PLEASE REFER TO WEBSITE FOR ALL FISHERY RULES  
[www.RDAA.co.uk](http://www.RDAA.co.uk)

## WYLIES



**P** Parking can be found at pile.lease.discrepancy

Wylies is renowned for Specimen Tench, Bream, Roach, Rudd, Perch and Pike.

Anyone attempting to fish the out of bounds areas will run the risk of permit confiscation.

Please ensure ALL gates are closed.

Take all litter home.

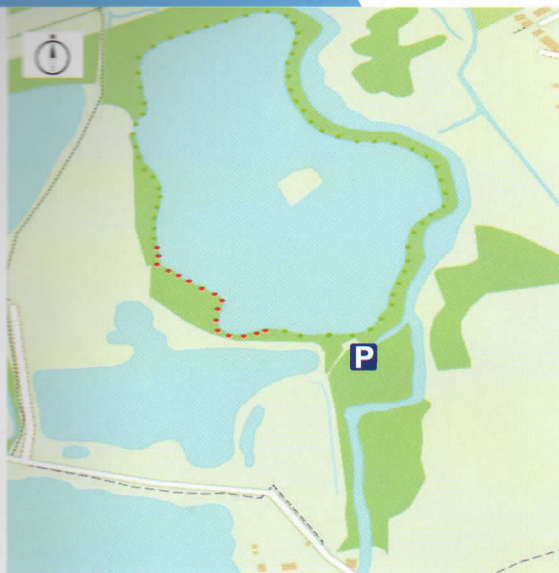
**NO NIGHT FISHING**

### LAKE VENUES

45

PLEASE REFER TO WEBSITE FOR ALL FISHERY RULES  
[www.RDAA.co.uk](http://www.RDAA.co.uk)

## WHISTLEY MILL LAKE



**P** Parking can be found at caused.scooped.nozzle

Whistley Mill lake is renowned for big Carp fishing, Specimen Tench, Pike and Bream are also present.

Anyone attempting to fish the out of bounds areas will run the risk of permit confiscation.

Please ensure ALL gates are closed.

Take all litter home.

Night fishing on North/Platinum permit only.

46

### LAKE VENUES

PLEASE REFER TO WEBSITE FOR ALL FISHERY RULES  
[www.RDAA.co.uk](http://www.RDAA.co.uk)

## SONNING EYE LAKE



Lake venue start verge.former.served

Lake venue end ages.transit.wide

**P** Parking can be found at simply.stroke.filed

There is also a small area for parking at the Northern end of the lake rapid.pulse.grass

**NO FISHING** within 30m of overhead powerlines.

Sonning eye lake has a history of big Carp and huge shoals of Bream. Tench, Pike and Perch are also present.

Anyone attempting to fish out of bounds will run the risk of losing their permit.

Night fishing on Lake - North/Platinum permit only.

### LAKE VENUES

47

PLEASE REFER TO WEBSITE FOR ALL FISHERY RULES  
[www.RDAA.co.uk](http://www.RDAA.co.uk)

## LONGWATER



You must visit security before fishing, which is in building 100.

It can be found at [appeal.volunteered.myself](https://www.appeal.volunteered.myself)

The venue has an abundance of Roach, Bream, Rudd, Perch, Tench and Pike.

Take all litter home and respect other lake users.

### NO NIGHT FISHING

48

### LAKE VENUES

PLEASE REFER TO WEBSITE FOR ALL FISHERY RULES

[www.RDAA.co.uk](http://www.RDAA.co.uk)



## Welcome to RDAA - Important Information

### Contacts

Bailiff Hotline...0118 207 8968

this is a monitored answer phone service.

For general inquiries please email [info@rdaa.co.uk](mailto:info@rdaa.co.uk)

Environment Agency Pollution & Emergency Incidents  
0800 80 70 60

Canal & Rivers Trust 0800 47 999 47

Swan Lifeline 01753 859 397

### Rules and Safety Advice

- Members are expected to familiarise themselves with our rules and fishing times before fishing. This information can be found at [www.rdaa.co.uk](http://www.rdaa.co.uk) or by following the link to our rules on your **Clubmate App**.

#### Your continued membership could be at risk.

- No litter will be tolerated and you are responsible for ALL litter found in your swim.
- No fishing within 30m either side of any overhead power lines.
- Be aware of high or undercut banks and trip hazards.
- Check the weather forecasts and river gauges if in doubt before fishing.
- Follow our advice at [www.rdaa.co.uk](http://www.rdaa.co.uk) regarding fishing in adverse weather conditions.

3